

## SH3GL2 Polyclonal Antibody

**Catalog No.** E-AB-61075

*Note:* Centrifuge before opening to ensure complete recovery of vial contents.

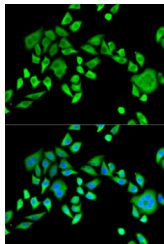
### Description

<b>Reactivity</b>	Human, Mouse
<b>Immunogen</b>	Recombinant fusion protein of human SH3GL2 (NP_003017.1).
<b>Host</b>	Rabbit
<b>Isotype</b>	IgG
<b>Purification</b>	Affinity purification
<b>Conjugation</b>	Unconjugated
<b>Buffer</b>	PBS with 0.02% sodium azide, 50% glycerol, pH7.3.

### Applications Recommended Dilution

**IF 1:50-1:200**

### Data



Immunofluorescence analysis of HeLa cells using SH3GL2 Polyclonal Antibody

### Preparation & Storage

**Storage** Store at -20°C. Avoid freeze / thaw cycles.

### Background

Implicated in synaptic vesicle endocytosis. May recruit other proteins to membranes with high curvature. Required for BDNF-dependent dendrite outgrowth. Cooperates with SH3GL2 to mediate BDNF-NTRK2 early endocytic trafficking and signaling from early endosomes.

### For Research Use Only