

## CLCN5 Polyclonal Antibody

**Catalog No.** E-AB-61078

*Note:* Centrifuge before opening to ensure complete recovery of vial contents.

### Description

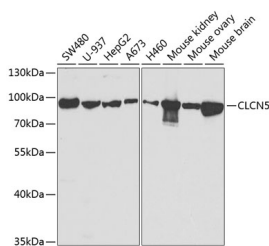
<b>Reactivity</b>	Human, Mouse
<b>Immunogen</b>	Recombinant fusion protein of human CLCN5 (NP_001121370.1).
<b>Host</b>	Rabbit
<b>Isotype</b>	IgG
<b>Purification</b>	Affinity purification
<b>Conjugation</b>	Unconjugated
<b>Buffer</b>	PBS with 0.02% sodium azide, 50% glycerol, pH7.3.

### Applications Recommended Dilution

**WB 1:500-1:2000 IF**

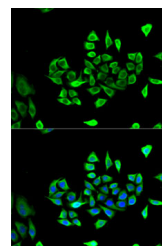
**1:50-1:200**

### Data



Western blot analysis of extracts of various cell lines using CLCN5 Polyclonal Antibody at dilution of 1:1000.

**Observed Mw:100kDa**  
**Calculated Mw:83kDa/90kDa**



Immunofluorescence analysis of U2OS cells using CLCN5 Polyclonal Antibody

### Preparation & Storage

**Storage** Store at -20°C. Avoid freeze / thaw cycles.

### Background

This gene encodes a member of the CIC family of chloride ion channels and ion transporters. The encoded protein is primarily localized to endosomal membranes and may function to facilitate albumin uptake by the renal proximal tubule. Mutations in this gene have been found in Dent disease and renal tubular disorders complicated by nephrolithiasis. Alternatively spliced transcript variants have been found for this gene.

### For Research Use Only