

DIAPH1 Polyclonal Antibody

Catalog No. E-AB-61109

Note: Centrifuge before opening to ensure complete recovery of vial contents.

Description

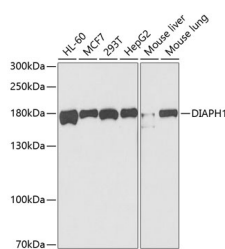
Reactivity	Human, Mouse
Immunogen	Recombinant fusion protein of human DIAPH1 (NP_001073280.1).
Host	Rabbit
Isotype	IgG
Purification	Affinity purification
Conjugation	Unconjugated
Buffer	PBS with 0.02% sodium azide, 50% glycerol, pH7.3.

Applications Recommended Dilution

WB 1:500-1:2000 IF

1:50-1:100

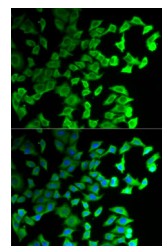
Data



Western blot analysis of extracts of various cell lines using DIAPH1 Polyclonal Antibody at dilution of 1:1000.

Observed Mw:178kDa

Calculated Mw:138kDa/140kDa/141kDa



Immunofluorescence analysis of U2OS cells using DIAPH1 Polyclonal Antibody

Preparation & Storage

Storage Store at -20°C. Avoid freeze / thaw cycles.

Background

This gene is a homolog of the *Drosophila* diaphanous gene, and has been linked to autosomal dominant, fully penetrant, nonsyndromic sensorineural progressive low-frequency hearing loss. Actin polymerization involves proteins known to interact with diaphanous protein in *Drosophila* and mouse. It has therefore been speculated that this gene may have a role in the regulation of actin polymerization in hair cells of the inner ear. Alternatively spliced transcript variants encoding distinct isoforms have been found for this gene.

For Research Use Only