

## P2RY2 Polyclonal Antibody

**Catalog No.** E-AB-61115

*Note:* Centrifuge before opening to ensure complete recovery of vial contents.

### Description

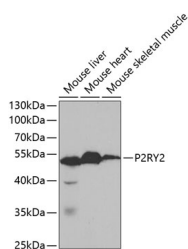
|                     |  |
|---------------------|--|
| <b>Reactivity</b>   | Human, Mouse   |
| <b>Immunogen</b>    | Recombinant fusion protein of human P2RY2 (NP_788086.1). |
| <b>Host</b>         | Rabbit   |
| <b>Isotype</b>      | IgG  |
| <b>Purification</b> | Affinity purification                                    |
| <b>Conjugation</b>  | Unconjugated   |
| <b>Buffer</b>       | PBS with 0.02% sodium azide, 50% glycerol, pH7.3.        |

### Applications Recommended Dilution

**WB 1:500-1:2000 IF**

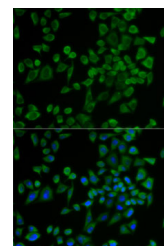
**1:10-1:100**

### Data



Western blot analysis of extracts of various cell lines using P2RY2 Polyclonal Antibody at dilution of 1:1000.

**Observed Mw:50kDa**  
**Calculated Mw:42kDa**



Immunofluorescence analysis of U2OS cells using P2RY2 Polyclonal Antibody

### Preparation & Storage

**Storage** Store at -20°C. Avoid freeze / thaw cycles.

### Background

The product of this gene belongs to the family of P2 receptors, which is activated by extracellular nucleotides and subdivided into P2X ligand-gated ion channels and P2Y G-protein coupled receptors. This family has several receptor subtypes with different pharmacological selectivity, which overlaps in some cases, for various adenosine and uridine nucleotides. This receptor, found on many cell types, is activated by ATP and UTP and is reported to be overexpressed on some cancer cell types. It is involved in many cellular functions, such as proliferation, apoptosis and inflammation. Three transcript variants encoding the same protein have been identified for this gene.

### For Research Use Only