

CD22 Polyclonal Antibody

Catalog No. E-AB-61118

Note: Centrifuge before opening to ensure complete recovery of vial contents.

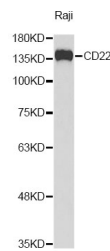
Description

Reactivity	Human,Mouse
Immunogen	Recombinant protein of human CD22
Host	Rabbit
Isotype	IgG
Purification	Affinity purification
Conjugation	Unconjugated
Buffer	PBS with 0.02% sodium azide and 50% glycerol pH 7.4.

Applications Recommended Dilution

WB 1:500-1:2000

Data



Western blot analysis of extracts of Raji cells with
CD22 Polyclonal Antibody

Observed Mw:135kDa

Calculated Mw:75kDa/84kDa/85kDa/95kDa

Preparation & Storage

Storage Store at -20°C. Avoid freeze / thaw cycles.

For Research Use Only