

HELLS Polyclonal Antibody

Catalog No. E-AB-61139

Note: Centrifuge before opening to ensure complete recovery of vial contents.

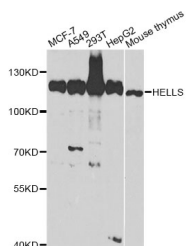
Description

Reactivity	Human, Mouse, Rat
Immunogen	Recombinant protein of human HELLS
Host	Rabbit
Isotype	IgG
Purification	Affinity purification
Conjugation	Unconjugated
Buffer	PBS with 0.02% sodium azide and 50% glycerol pH 7.4.

Applications Recommended Dilution

WB 1:500 - 1:2000
IHC 1:50 - 1:200
IP 1:50 - 1:200

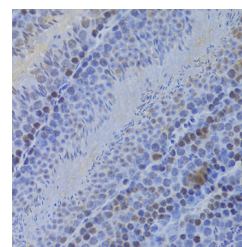
Data



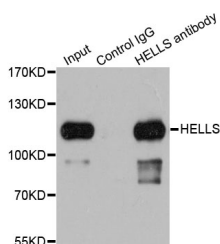
Western blot analysis of extracts of various cell lines with HELLS Polyclonal Antibody

Observed Mw:120kDa

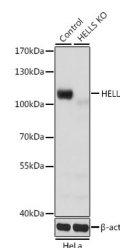
Calculated Mw:14kDa/36-39kDa/81-97kDa



Immunohistochemistry of paraffin-embedded mouse testis with HELLS Polyclonal Antibody



Immunoprecipitation analysis of 200ug extracts of 293T cells with HELLS Polyclonal Antibody



Western blot analysis of extracts from normal (control) and HELLS knockout (KO) HeLa cells, using HELLS Polyclonal Antibody at dilution of 1:1000.

Preparation & Storage

For Research Use Only

Storage Store at -20°C. Avoid freeze / thaw cycles.

Background

This gene encodes a lymphoid-specific helicase. Other helicases function in processes involving DNA strand separation, including replication, repair, recombination, and transcription. This protein is thought to be involved with cellular proliferation and may play a role in leukemogenesis. Alternatively spliced transcript variants encoding different isoforms have been identified.