

CELF1 Polyclonal Antibody

Catalog Number:E-AB-62360

Note: Centrifuge before opening to ensure complete recovery of vial contents.

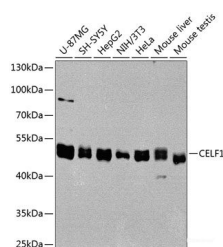
Description

Reactivity	Human,Mouse,Rat
Immunogen	Recombinant fusion protein of human CELF1 (NP_941989.1).
Host	Rabbit
Isotype	IgG
Purification	Affinity purification
Conjugation	Unconjugated
Formulation	PBS with 0.02% sodium azide, 50% glycerol, pH7.3.

Applications Recommended Dilution

WB	1:200-1:2000
-----------	--------------

Data



Western blot analysis of extracts of various cell lines using CELF1 Polyclonal Antibody at dilution of 1:1000.

Observed Mw:52kDa

Calculated Mw:50kDa/51kDa/52kDa/55kDa

Preparation & Storage

Storage Store at -20°C. Avoid freeze / thaw cycles.

Background

Members of the CELF/BRUNOL protein family contain two N-terminal RNA recognition motif (RRM) domains, one C-terminal RRM domain, and a divergent segment of 160-230 aa between the second and third RRM domains. Members of this protein family regulate pre-mRNA alternative splicing and may also be involved in mRNA editing, and translation. This gene may play a role in myotonic dystrophy type 1 (DM1) via interactions with the dystrophin myotonic-protein kinase (DMPK) gene. Alternative splicing results in multiple transcript variants encoding different isoforms.

For Research Use Only

A Reliable Research Partner in Life Science and Medicine

Toll-free: 1-888-852-8623

Web: www.elabscience.com

Tel: 1-832-243-6086

Email: techsupport@elabscience.com

Fax: 1-832-243-6017