

SRRM1 Polyclonal Antibody

Catalog Number:E-AB-65529

Note: Centrifuge before opening to ensure complete recovery of vial contents.

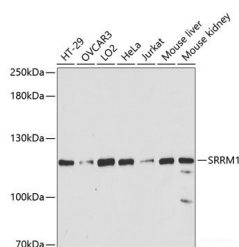
Description

Reactivity	Human,Mouse
Immunogen	Recombinant fusion protein of human SRRM1 (NP_005830.2).
Host	Rabbit
Isotype	IgG
Purification	Affinity purification
Conjugation	Unconjugated
Formulation	PBS with 0.02% sodium azide, 50% glycerol, pH7.3.

Applications Recommended Dilution

WB	1:500-1:1000
-----------	--------------

Data



Western blot analysis of extracts of various cell lines using SRRM1 Polyclonal Antibody at dilution of 1:3000.

Observed Mw:102kDa
Calculated Mw:102kDa

Preparation & Storage

Storage Store at -20°C. Avoid freeze / thaw cycles.

Background

SRRM1 (Serine And Arginine Repetitive Matrix 1) is a Protein Coding gene. Diseases associated with SRRM1 include Cortical Thymoma and Epithelial Malignant Thymoma. Among its related pathways are Cleavage of Growing Transcript in the Termination Region and Transport of Mature Transcript to Cytoplasm.

For Research Use Only

A Reliable Research Partner in Life Science and Medicine

Toll-free: 1-888-852-8623

Web: www.elabscience.com

Tel: 1-832-243-6086

Email: techsupport@elabscience.com

Fax: 1-832-243-6017