

CIRBP Polyclonal Antibody

Catalog No. E-AB-63842

Note: Centrifuge before opening to ensure complete recovery of vial contents.

Description

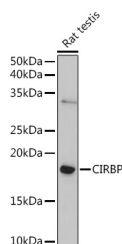
Reactivity	Human,Mouse,Rat
Immunogen	Recombinant fusion protein of human CIRBP
Host	Rabbit
Isotype	IgG
Purification	Affinity purification
Conjugation	Unconjugated
Buffer	PBS with 0.02% sodium azide,50% glycerol,pH7.3.

Applications

Recommended Dilution

WB	1:500-1:1000
IHC	1:50-1:100

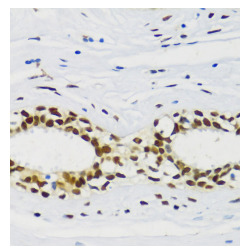
Data



Western blot analysis of extracts of Rat testis using CIRBP Polyclonal Antibody at 1:1000 dilution.

Observed Mw:18KDa

Calculated Mw:18kDa/26kDa/28kDa



Immunohistochemistry of paraffin-embedded human breast cancer using CIRBP Polyclonal Antibody at dilution of 1:100 (40x lens). Perform microwave antigen retrieval with 10 mM PBS buffer pH 7.2 before commencing with IHC staining protocol.

Preparation & Storage

Storage Store at -20°C. Avoid freeze / thaw cycles.

Background

Cold-inducible mRNA binding protein that plays a protective role in the genotoxic stress response by stabilizing transcripts of genes involved in cell survival. Acts as a translational activator. Seems to play an essential role in cold-induced suppression of cell proliferation. Binds specifically to the 3'-untranslated regions (3'-UTRs) of stress-responsive transcripts RPA2 and TXN. Acts as a translational repressor (By similarity. Promotes assembly of stress granules (SGs), when overexpressed.

For Research Use Only