

## KHDRBS2 Polyclonal Antibody

**Catalog No.** E-AB-63223

*Note:* Centrifuge before opening to ensure complete recovery of vial contents.

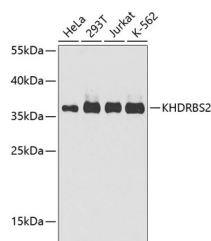
### Description

<b>Reactivity</b>	Human, Mouse
<b>Immunogen</b>	A synthetic peptide of human KHDRBS2 (NP_689901.2).
<b>Host</b>	Rabbit
<b>Isotype</b>	IgG
<b>Purification</b>	Affinity purification
<b>Conjugation</b>	Unconjugated
<b>Buffer</b>	PBS with 0.02% sodium azide, 50% glycerol, pH7.3.

### Applications Recommended Dilution

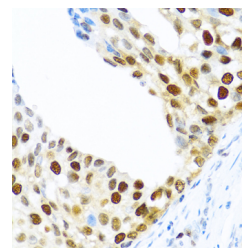
<b>WB</b>	1:500-1:1000
<b>IHC</b>	1:100-1:200

### Data

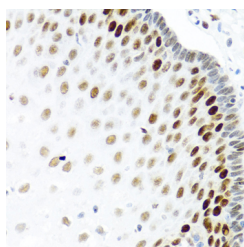


Western blot analysis of extracts of various cell lines using KHDRBS2 Polyclonal Antibody at dilution of 1:1000.

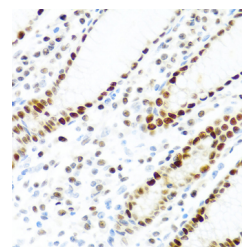
**Observed Mw:39kDa**  
**Calculated Mw:38kDa**



Immunohistochemistry of paraffin-embedded Human prostate cancer using KHDRBS2 Polyclonal Antibody at dilution of 1:100 (40x lens).



Immunohistochemistry of paraffin-embedded Human esophagus using KHDRBS2 Polyclonal Antibody at dilution of 1:100 (40x lens).



Immunohistochemistry of paraffin-embedded Human stomach using KHDRBS2 Polyclonal Antibody at dilution of 1:100 (40x lens).

### Preparation & Storage

#### For Research Use Only

**Storage** Store at -20°C. Avoid freeze / thaw cycles.

## Background

KHDRBS2 (KH RNA Binding Domain Containing, Signal Transduction Associated 2) is a Protein Coding gene. Diseases associated with KHDRBS2 include Atrial Septal Defect 2. Among its related pathways are Signaling by GPCR and Signaling by PTK6. Gene Ontology (GO) annotations related to this gene include nucleic acid binding and protein heterodimerization activity. An important paralog of this gene is KHDRBS3.

---

## For Research Use Only