

CRABP2 Polyclonal Antibody

Catalog Number:E-AB-61817

1 Publications



Note: Centrifuge before opening to ensure complete recovery of vial contents.

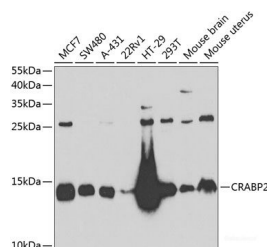
Description

Reactivity	Human,Mouse,Rat
Immunogen	Recombinant fusion protein of human CRABP2
Host	Rabbit
Isotype	IgG
Purification	Affinity purification
Conjugation	Unconjugated
Formulation	PBS with 0.02% sodium azide,50% glycerol,pH7.3.

Applications Recommended Dilution

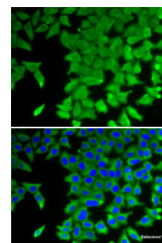
WB	1:500-1:2000
IF	1:20-1:100

Data



Western blot analysis of extracts of various cell lines using CRABP2 Polyclonal Antibody at 1:1000 dilution.

Observed Mw:15kDa
Calculated Mw:15kDa



Immunofluorescence analysis of U2OS cells using CRABP2 Polyclonal Antibody Blue: DAPI for nuclear staining.

Preparation & Storage

Storage Store at -20°C. Avoid freeze / thaw cycles.

Background

This gene encodes a member of the retinoic acid (RA, a form of vitamin A) binding protein family and lipocalin/cytosolic fatty-acid binding protein family. The protein is a cytosol-to-nuclear shuttling protein, which facilitates RA binding to its cognate receptor complex and transfer to the nucleus. It is involved in the retinoid signaling pathway, and is associated with increased circulating low-density lipoprotein cholesterol. Alternatively spliced transcript variants encoding the same protein have been found for this gene.

For Research Use Only

A Reliable Research Partner in Life Science and Medicine

Toll-free: 1-888-852-8623

Web: www.elabsience.com

Tel: 1-832-243-6086

Email: techsupport@elabsience.com

Fax: 1-832-243-6017