

## (KO Validated) FLOT1 Polyclonal Antibody

**Catalog No.** E-AB-61836

*Note:* Centrifuge before opening to ensure complete recovery of vial contents.

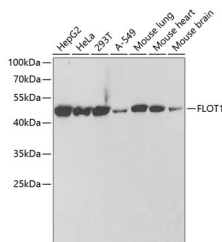
### Description

<b>Reactivity</b>	Human,Mouse,Rat
<b>Immunogen</b>	Recombinant fusion protein of human FLOT1 (NP_005794.1).
<b>Host</b>	Rabbit
<b>Isotype</b>	IgG
<b>Purification</b>	Affinity purification
<b>Conjugation</b>	Unconjugated
<b>Buffer</b>	PBS with 0.02% sodium azide, 50% glycerol, pH7.3.

### Applications Recommended Dilution

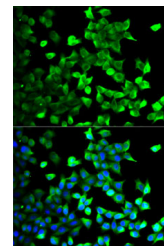
<b>WB</b>	1:500-1:2000
<b>IF</b>	1:10-1:100

### Data



Western blot analysis of extracts of various cell lines using FLOT1 Polyclonal Antibody at dilution of 1:1000.

**Observed Mw:47kDa**  
**Calculated Mw:42kDa/47kDa**



Immunofluorescence analysis of U2OS cells using FLOT1 Polyclonal Antibody

### Preparation & Storage

**Storage** Store at -20°C. Avoid freeze / thaw cycles.

### Background

This gene encodes an protein that localizes to the caveolae, which are small domains on the inner cell membranes. This protein plays a role in vesicle trafficking and cell morphology. Alternative splicing results in multiple transcript variants.

### For Research Use Only