

CBX4 Polyclonal Antibody

Catalog No. E-AB-61837

Note: Centrifuge before opening to ensure complete recovery of vial contents.

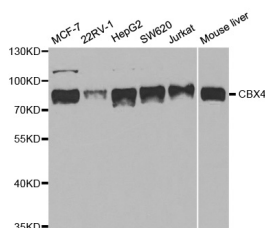
Description

Reactivity	Human, Mouse
Immunogen	Recombinant protein of human CBX4
Host	Rabbit
Isotype	IgG
Purification	Affinity purification
Conjugation	Unconjugated
Buffer	PBS with 0.02% sodium azide and 50% glycerol pH 7.4.

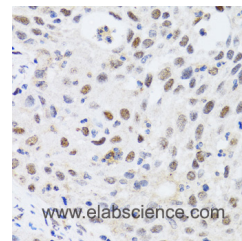
Applications Recommended Dilution

WB 1:500 - 1:2000
IHC 1:50 - 1:200 IP
1:50 - 1:200

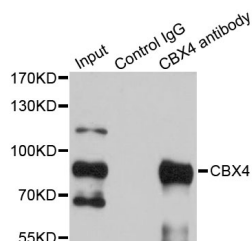
Data



Western blot analysis of extracts of various cell lines with CBX4 Polyclonal Antibody
Observed Mw:85kDa
Calculated Mw:31kDa/61kDa



Immunohistochemistry of paraffin-embedded human lung cancer with CBX4 Polyclonal Antibody



Immunoprecipitation analysis of 200ug extracts of HepG2 cells with CBX4 Polyclonal Antibody

Preparation & Storage

Storage Store at -20°C. Avoid freeze / thaw cycles.

For Research Use Only