

## TIA1 Polyclonal Antibody

**Catalog No.** E-AB-61843

*Note:* Centrifuge before opening to ensure complete recovery of vial contents.

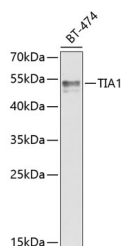
### Description

<b>Reactivity</b>	Human,Mouse,Rat
<b>Immunogen</b>	Recombinant fusion protein of human TIA1 (NP_071505.2).
<b>Host</b>	Rabbit
<b>Isotype</b>	IgG
<b>Purification</b>	Affinity purification
<b>Conjugation</b>	Unconjugated
<b>Buffer</b>	PBS with 0.02% sodium azide, 50% glycerol, pH7.3.

### Applications Recommended Dilution

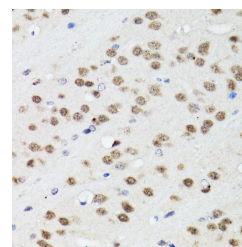
**WB 1:500-1:2000 IHC**  
**1:50-1:200 IF**  
**1:20-1:100**

### Data

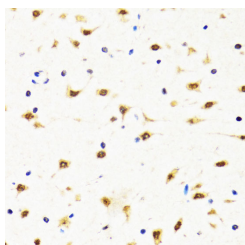


Western blot analysis of extracts of BT-474 cells using TIA1 Polyclonal Antibody at dilution of 1:1000.

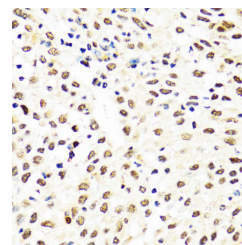
**Observed Mw:54kDa**  
**Calculated Mw:24kDa/41kDa/42kDa**



Immunohistochemistry of paraffin-embedded Mouse brain using TIA1 Polyclonal Antibody at dilution of 1:100 (40x lens).

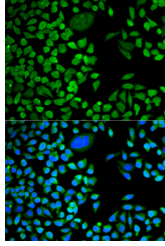


Immunohistochemistry of paraffin-embedded Rat brain using TIA1 Polyclonal Antibody at dilution of 1:100 (40x lens).



Immunohistochemistry of paraffin-embedded Human lung cancer using TIA1 Polyclonal Antibody at dilution of 1:100 (40x lens).

### For Research Use Only



Immunofluorescence analysis of HeLa cells using  
TIA1 Polyclonal Antibody

## Preparation & Storage

**Storage** Store at -20°C. Avoid freeze / thaw cycles.

## Background

The product encoded by this gene is a member of a RNA-binding protein family and possesses nucleolytic activity against cytotoxic lymphocyte (CTL) target cells. It has been suggested that this protein may be involved in the induction of apoptosis as it preferentially recognizes poly(A) homopolymers and induces DNA fragmentation in CTL targets. The major granule-associated species is a 15-kDa protein that is thought to be derived from the carboxyl terminus of the 40-kDa product by proteolytic processing. Alternative splicing resulting in different isoforms of this gene product has been described in the literature.