

## ALKBH1 Polyclonal Antibody

**Catalog No.** E-AB-61845

*Note:* Centrifuge before opening to ensure complete recovery of vial contents.

### Description

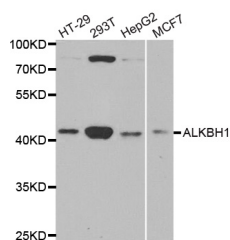
<b>Reactivity</b>	Human
<b>Immunogen</b>	Recombinant protein of human ALKBH1
<b>Host</b>	Rabbit
<b>Isotype</b>	IgG
<b>Purification</b>	Affinity purification
<b>Conjugation</b>	Unconjugated
<b>Buffer</b>	PBS with 0.02% sodium azide and 50% glycerol pH 7.4.

### Applications Recommended Dilution

**WB 1:500 - 1:2000 IP**

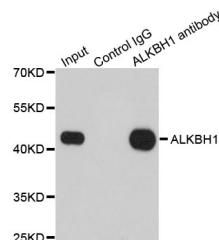
**1:50 - 1:200**

### Data



Western blot analysis of extracts of various cell lines with ALKBH1 Polyclonal Antibody

**Observed Mw:44kDa**  
**Calculated Mw:43kDa**



Immunoprecipitation analysis of 200ug extracts of 293T cells with ALKBH1 Polyclonal Antibody

### Preparation & Storage

**Storage** Store at -20°C. Avoid freeze / thaw cycles.

### Background

This gene encodes a homolog to the E. coli alkB gene product. The E. coli alkB protein is part of the adaptive response mechanism of DNA alkylation damage repair. It is involved in damage reversal by oxidative demethylation of 1-methyladenine and 3-methylcytosine.

### For Research Use Only