

## MDH2 Polyclonal Antibody

**Catalog No.** E-AB-61867

*Note:* Centrifuge before opening to ensure complete recovery of vial contents.

### Description

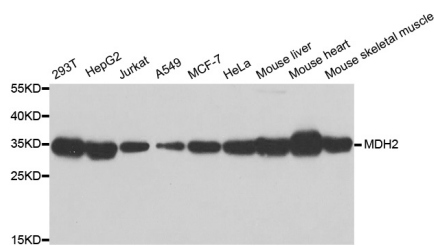
<b>Reactivity</b>	Human, Mouse
<b>Immunogen</b>	Recombinant protein of human MDH2
<b>Host</b>	Rabbit
<b>Isotype</b>	IgG
<b>Purification</b>	Affinity purification
<b>Conjugation</b>	Unconjugated
<b>Buffer</b>	PBS with 0.02% sodium azide and 50% glycerol pH 7.4.

### Applications Recommended Dilution

**WB 1:500 - 1:2000**

**IHC 1:50 - 1:200**

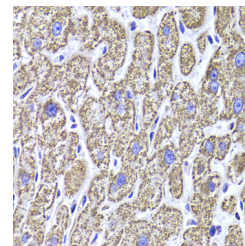
### Data



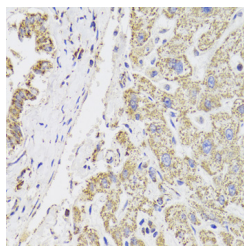
Western blot analysis of extracts of various cell lines with MDH2 Polyclonal Antibody

**Observed Mw:35kDa**

**Calculated Mw:30kDa/35kDa**



Immunohistochemistry of paraffin-embedded human liver injury with MDH2 Polyclonal Antibody



Immunohistochemistry of paraffin-embedded human liver injury with MDH2 Polyclonal Antibody

### Preparation & Storage

**Storage** Store at -20°C. Avoid freeze / thaw cycles.

### Background

### For Research Use Only

Malate dehydrogenase catalyzes the reversible oxidation of malate to oxaloacetate, utilizing the NAD/NADH cofactor system in the citric acid cycle. The protein encoded by this gene is localized to the mitochondria and may play pivotal roles in the malate-aspartate shuttle that operates in the metabolic coordination between cytosol and mitochondria. Several transcript variants encoding different isoforms have been found for this gene.