

TKT Polyclonal Antibody

Catalog No. E-AB-61881

Note: Centrifuge before opening to ensure complete recovery of vial contents.

Description

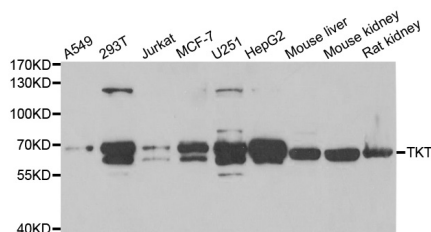
Reactivity	Human,Mouse,Rat
Immunogen	Recombinant protein of human TKT
Host	Rabbit
Isotype	IgG
Purification	Affinity purification
Conjugation	Unconjugated
Buffer	PBS with 0.02% sodium azide and 50% glycerol pH 7.4.

Applications Recommended Dilution

WB 1:500 - 1:2000 IF

1:10 - 1:100

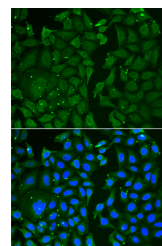
Data



Western blot analysis of extracts of various cell lines with TKT Polyclonal Antibody

Observed Mw:68kDa

Calculated Mw:67kDa/68kDa



Immunofluorescence analysis of U2OS cells with TKT Polyclonal Antibody

Preparation & Storage

Storage Store at -20°C. Avoid freeze / thaw cycles.

Background

This gene encodes a thiamine-dependent enzyme which plays a role in the channeling of excess sugar phosphates to glycolysis in the pentose phosphate pathway. Alternatively spliced transcript variants encoding multiple isoforms have been observed for this gene.

For Research Use Only