

## TXNL1 Polyclonal Antibody

Catalog No. E-AB-61887

**Note:** Centrifuge before opening to ensure complete recovery of vial contents.

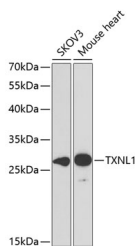
### Description

<b>Reactivity</b>	Human, Mouse, Rat
<b>Immunogen</b>	Recombinant fusion protein of human TXNL1 (NP_004777.1).
<b>Host</b>	Rabbit
<b>Isotype</b>	IgG
<b>Purification</b>	Affinity purification
<b>Conjugation</b>	Unconjugated
<b>Buffer</b>	PBS with 0.02% sodium azide, 50% glycerol, pH7.3.

### Applications Recommended Dilution

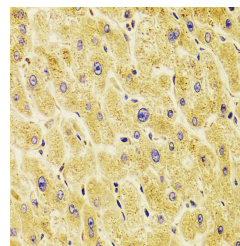
<b>WB</b>	1:500-1:2000
<b>IHC</b>	1:50-1:200
<b>IF</b>	1:50-1:200

### Data

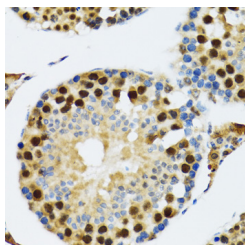


Western blot analysis of extracts of various cell lines using TXNL1 Polyclonal Antibody at dilution of 1:1000.

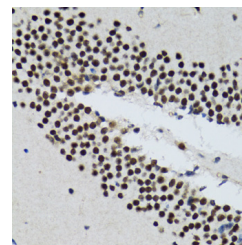
**Observed Mw:32kDa**  
**Calculated Mw:32kDa**



Immunohistochemistry of paraffin-embedded Human liver damage using TXNL1 Polyclonal Antibody at dilution of 1:100 (40x lens).

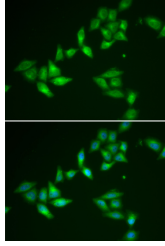


Immunohistochemistry of paraffin-embedded Rat testis using TXNL1 Polyclonal Antibody at dilution of 1:100 (40x lens).



Immunohistochemistry of paraffin-embedded Rat brain using TXNL1 Polyclonal Antibody at dilution of 1:100 (40x lens).

### For Research Use Only



Immunofluorescence analysis of U2OS cells using  
TXNL1 Polyclonal Antibody

## Preparation & Storage

**Storage** Store at -20°C. Avoid freeze / thaw cycles.

## Background

TXNL1 (Thioredoxin Like 1) is a Protein Coding gene. Diseases associated with TXNL1 include Human Monocytic Ehrlichiosis and Ehrlichiosis. Gene Ontology (GO) annotations related to this gene include protein disulfide oxidoreductase activity and disulfide oxidoreductase activity. An important paralog of this gene is TXN.

## For Research Use Only