

## JADE1 Polyclonal Antibody

**Catalog No.** E-AB-61897

*Note:* Centrifuge before opening to ensure complete recovery of vial contents.

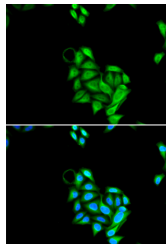
### Description

<b>Reactivity</b>	Human,Mouse
<b>Immunogen</b>	Recombinant fusion protein of human JADE1 (NP_079176.2).
<b>Host</b>	Rabbit
<b>Isotype</b>	IgG
<b>Purification</b>	Affinity purification
<b>Conjugation</b>	Unconjugated
<b>Buffer</b>	PBS with 0.02% sodium azide, 50% glycerol, pH7.3.

### Applications Recommended Dilution

**IF 1:10-1:100**

### Data



Immunofluorescence analysis of U2OS cells using JADE1 Polyclonal Antibody

### Preparation & Storage

**Storage** Store at -20°C. Avoid freeze / thaw cycles.

### Background

JADE1 (Jade Family PHD Finger 1) is a Protein Coding gene. Diseases associated with JADE1 include Atrophy Of Testis. Among its related pathways are Chromatin organization. An important paralog of this gene is JADE2.

### For Research Use Only