

# RCC1 Polyclonal Antibody

Catalog Number:E-AB-63849

**Note:** Centrifuge before opening to ensure complete recovery of vial contents.

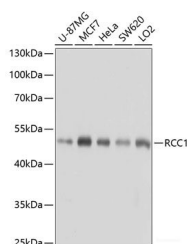
## Description

<b>Reactivity</b>	Human,Mouse,Rat
<b>Immunogen</b>	Recombinant fusion protein of human RCC1 (NP_001260.1).
<b>Host</b>	Rabbit
<b>Isotype</b>	IgG
<b>Purification</b>	Affinity purification
<b>Conjugation</b>	Unconjugated
<b>Formulation</b>	PBS with 0.02% sodium azide, 50% glycerol, pH7.3.

## Applications Recommended Dilution

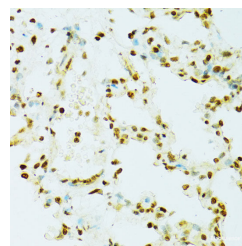
<b>WB</b>	1:1000-1:2000
<b>IHC</b>	1:50-1:200
<b>IF</b>	1:50-1:200

## Data

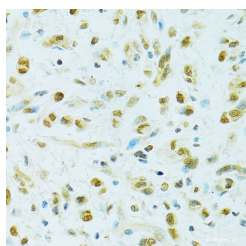


Western blot analysis of extracts of various cell lines using RCC1 Polyclonal Antibody at dilution of 1:1000.

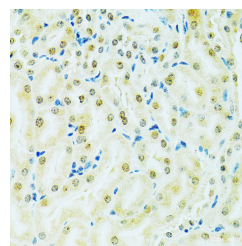
**Observed Mw:45kDa**  
**Calculated Mw:44kDa/48kDa**



Immunohistochemistry of paraffin-embedded Rat lung using RCC1 Polyclonal Antibody at dilution of 1:100 (40x lens).



Immunohistochemistry of paraffin-embedded Human gastric cancer using RCC1 Polyclonal Antibody at dilution of 1:100 (40x lens).



Immunohistochemistry of paraffin-embedded Mouse kidney using RCC1 Polyclonal Antibody at dilution of 1:100 (40x lens).

## For Research Use Only

A Reliable Research Partner in Life Science and Medicine

Toll-free: 1-888-852-8623

Web: [www.elabscience.com](http://www.elabscience.com)

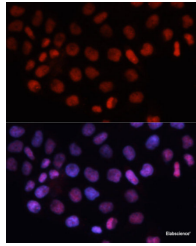
Tel: 1-832-243-6086

Email: [techsupport@elabscience.com](mailto:techsupport@elabscience.com)

Fax: 1-832-243-6017

# RCC1 Polyclonal Antibody

Catalog Number:E-AB-63849



Immunofluorescence analysis of HeLa cells using  
RCC1 Polyclonal Antibody at dilution of 1:100.  
Blue: DAPI for nuclear staining.

## Preparation & Storage

**Storage** Store at -20°C. Avoid freeze / thaw cycles.

## Background

RCC1 (Regulator Of Chromosome Condensation 1) is a Protein Coding gene. Diseases associated with RCC1 include Raynaud Disease and Microcystic Meningioma. Among its related pathways are Cell cycle\_Spindle assembly and chromosome separation and Transport of the SLBP independent Mature mRNA. Gene Ontology (GO) annotations related to this gene include chromatin binding and nucleosomal DNA binding. An important paralog of this gene is HERC1.

## For Research Use Only

A Reliable Research Partner in Life Science and Medicine

Toll-free: 1-888-852-8623

Web: [www.elabscience.com](http://www.elabscience.com)

Tel: 1-832-243-6086

Email: [techsupport@elabscience.com](mailto:techsupport@elabscience.com)

Fax: 1-832-243-6017