

C1R Polyclonal Antibody

Catalog No. E-AB-61905

Note: Centrifuge before opening to ensure complete recovery of vial contents.

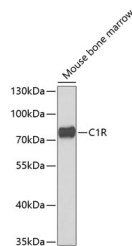
Description

Reactivity	Human,Mouse,Rat
Immunogen	Recombinant fusion protein of human C1R (NP_001724.3).
Host	Rabbit
Isotype	IgG
Purification	Affinity purification
Conjugation	Unconjugated
Buffer	PBS with 0.02% sodium azide, 50% glycerol, pH7.3.

Applications Recommended Dilution

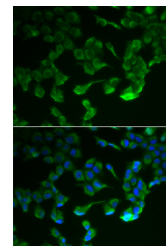
WB 1:500-1:2000 IF
1:50-1:200

Data



Western blot analysis of extracts of Mouse bone marrow using C1R Polyclonal Antibody at dilution of 1:1000.

Observed Mw:80kDa
Calculated Mw:80kDa



Immunofluorescence analysis of HeLa cells using C1R Polyclonal Antibody

Preparation & Storage

Storage Store at -20°C. Avoid freeze / thaw cycles.

Background

C1R (Complement C1r) is a Protein Coding gene. Diseases associated with C1R include Ehlers-Danlos Syndrome, Periodontal Type, 1 and Periodontal Ehlers-Danlos Syndrome. Among its related pathways are Creation of C4 and C2 activators and Complement and coagulation cascades. Gene Ontology (GO) annotations related to this gene include calcium ion binding and serine-type peptidase activity. An important paralog of this gene is MASP2.

For Research Use Only