

CLEC3B Polyclonal Antibody

Catalog No. E-AB-61949

Note: Centrifuge before opening to ensure complete recovery of vial contents.

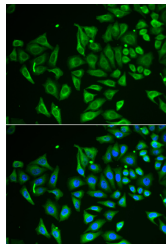
Description

Reactivity	Human,Mouse,Rat
Immunogen	Recombinant fusion protein of human CLEC3B (NP_003269.2).
Host	Rabbit
Isotype	IgG
Purification	Affinity purification
Conjugation	Unconjugated
Buffer	PBS with 0.02% sodium azide, 50% glycerol, pH7.3.

Applications Recommended Dilution

IF 1:10-1:100

Data



Immunofluorescence analysis of HeLa cells using CLEC3B Polyclonal Antibody

Preparation & Storage

Storage Store at -20°C. Avoid freeze / thaw cycles.

Background

CLEC3B (C-Type Lectin Domain Family 3 Member B) is a Protein Coding gene. Among its related pathways are Response to elevated platelet cytosolic Ca²⁺. GO annotations related to this gene include calcium ion binding and heparin binding. An important paralog of this gene is CLEC3A.

For Research Use Only