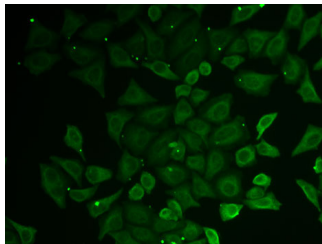


(KO Validated) C21orf33 Polyclonal Antibody

Catalog No. E-AB-61956

Note: Centrifuge before opening to ensure complete recovery of vial contents.**Description**

Reactivity	Human,Mouse,Rat
Immunogen	Recombinant fusion protein of human C21orf33 (NP_004640.4).
Host	Rabbit
Isotype	IgG
Purification	Affinity purification
Conjugation	Unconjugated
Buffer	PBS with 0.02% sodium azide, 50% glycerol, pH7.3.

Applications **Recommended Dilution****IF** 1:10-1:100**Data**

Immunofluorescence analysis of U2OS cells using
C21orf33 Polyclonal Antibody

Preparation & Storage**Storage** Store at -20°C. Avoid freeze / thaw cycles.**Background**

This gene encodes a potential mitochondrial protein that is a member of the DJ-1/PfpI gene family. This protein is overexpressed in fetal Down syndrome brain. Alternate splicing results in multiple transcript variants.

For Research Use Only