

BLZF1 Polyclonal Antibody

Catalog No. E-AB-61957

Note: Centrifuge before opening to ensure complete recovery of vial contents.

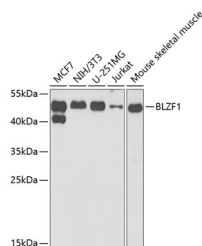
Description

| | |
|---------------------|--|
| Reactivity | Human, Mouse |
| Immunogen | Recombinant fusion protein of human BLZF1 (NP_003657.1). |
| Host | Rabbit |
| Isotype | IgG |
| Purification | Affinity purification |
| Conjugation | Unconjugated |
| Buffer | PBS with 0.02% sodium azide, 50% glycerol, pH7.3. |

Applications Recommended Dilution

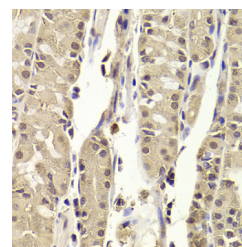
WB 1:500-1:2000 IHC
1:50-1:200 IF
1:50-1:200

Data

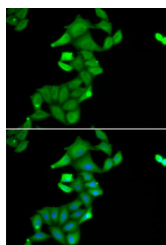


Western blot analysis of extracts of various cell lines using BLZF1 Polyclonal Antibody at dilution of 1:1000.

Observed Mw:45kDa
Calculated Mw:19kDa/44kDa



Immunohistochemistry of paraffin-embedded Human stomach using BLZF1 Polyclonal Antibody at dilution of 1:100 (40x lens).



Immunofluorescence analysis of U2OS cells using BLZF1 Polyclonal Antibody

Preparation & Storage

Storage Store at -20°C. Avoid freeze / thaw cycles.

For Research Use Only

Background

BLZF1 (Basic Leucine Zipper Nuclear Factor 1) is a Protein Coding gene. Diseases associated with BLZF1 include Paraneoplastic Cerebellar Degeneration and Lissencephaly, X-Linked, 1. Among its related pathways are Mitotic Prophase and Cell Cycle, Mitotic. Gene Ontology (GO) annotations related to this gene include DNA-binding transcription factor activity and ubiquitin protein ligase binding.