

## NCR1 Polyclonal Antibody

Catalog No. E-AB-61964

**Note:** Centrifuge before opening to ensure complete recovery of vial contents.

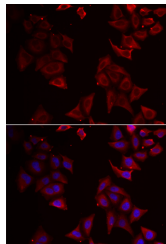
### Description

<b>Reactivity</b>	Human
<b>Immunogen</b>	Recombinant protein of human NCR1
<b>Host</b>	Rabbit
<b>Isotype</b>	IgG
<b>Purification</b>	Affinity purification
<b>Conjugation</b>	Unconjugated
<b>Buffer</b>	PBS with 0.02% sodium azide and 50% glycerol pH 7.4.

### Applications Recommended Dilution

**IF 1:50 - 1:100**

### Data



Immunofluorescence analysis of U2OS cells with  
NCR1 Polyclonal Antibody  
**Observed Mw: Refer to Figures**  
**Calculated Mw: 21kDa/22kDa/23kDa/32kDa/34kDa**

### Preparation & Storage

**Storage** Store at -20°C. Avoid freeze / thaw cycles.

### For Research Use Only