

UBE3C Polyclonal Antibody

Catalog No. E-AB-61968

Note: Centrifuge before opening to ensure complete recovery of vial contents.

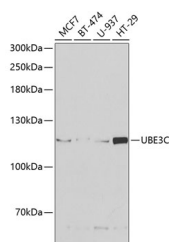
Description

Reactivity	Human
Immunogen	Recombinant fusion protein of human UBE3C (NP_055486.2).
Host	Rabbit
Isotype	IgG
Purification	Affinity purification
Conjugation	Unconjugated
Buffer	PBS with 0.02% sodium azide, 50% glycerol, pH7.3.

Applications Recommended Dilution

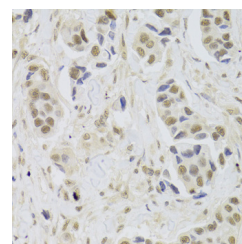
WB 1:500-1:2000 IHC
1:50-1:200 IF
1:10-1:100

Data

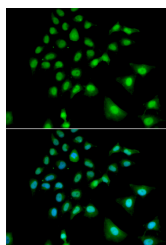


Western blot analysis of extracts of various cell lines using UBE3C Polyclonal Antibody at dilution of 1:1000.

Observed Mw:124kDa
Calculated Mw:45kDa/74kDa/123kDa



Immunohistochemistry of paraffin-embedded Human breast cancer using UBE3C Polyclonal Antibody at dilution of 1:100 (40x lens).



Immunofluorescence analysis of U2OS cells using UBE3C Polyclonal Antibody

Preparation & Storage

Storage Store at -20°C. Avoid freeze / thaw cycles.

For Research Use Only

Background

UBE3C (Ubiquitin Protein Ligase E3C) is a Protein Coding gene. Diseases associated with UBE3C include Coenzyme Q10 Deficiency, Primary, 2 and Neuronopathy, Distal Hereditary Motor, Type I. Among its related pathways are Innate Immune System and Class I MHC mediated antigen processing and presentation. Gene Ontology (GO) annotations related to this gene include ligase activity and ubiquitin-protein transferase activity. An important paralog of this gene is HACE1.

For Research Use Only