

## TIMM17A Polyclonal Antibody

**Catalog No.** E-AB-61973

**Note:** Centrifuge before opening to ensure complete recovery of vial contents.

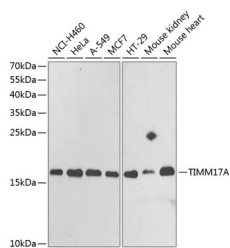
### Description

<b>Reactivity</b>	Human, Mouse
<b>Immunogen</b>	Recombinant fusion protein of human TIMM17A (NP_006326.1).
<b>Host</b>	Rabbit
<b>Isotype</b>	IgG
<b>Purification</b>	Affinity purification
<b>Conjugation</b>	Unconjugated
<b>Buffer</b>	PBS with 0.02% sodium azide, 50% glycerol, pH7.3.

### Applications Recommended Dilution

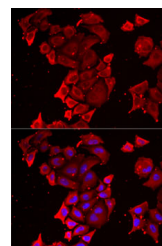
**WB 1:500-1:2000 IF**  
**1:10-1:100**

### Data



Western blot analysis of extracts of various cell lines using TIMM17A Polyclonal Antibody at dilution of 1:1000.

**Observed Mw:18kDa**  
**Calculated Mw:18kDa**



Immunofluorescence analysis of MCF7 cells using TIMM17A Polyclonal Antibody

### Preparation & Storage

**Storage** Store at -20°C. Avoid freeze / thaw cycles.

### Background

TIMM17A (Translocase Of Inner Mitochondrial Membrane 17A) is a Protein Coding gene. Diseases associated with TIMM17A include Barth Syndrome and Mohr-Tranebjaerg Syndrome. Among its related pathways are Metabolism of proteins and Mitochondrial protein import. Gene Ontology (GO) annotations related to this gene include P-P-bond-hydrolysis-driven protein transmembrane transporter activity. An important paralog of this gene is TIMM17B.

### For Research Use Only