

POLE3 Polyclonal Antibody

Catalog No. E-AB-61987

Note: Centrifuge before opening to ensure complete recovery of vial contents.

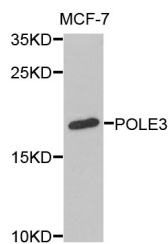
Description

Reactivity	Human, Mouse
Immunogen	Recombinant protein of human POLE3
Host	Rabbit
Isotype	IgG
Purification	Affinity purification
Conjugation	Unconjugated
Buffer	PBS with 0.02% sodium azide and 50% glycerol pH 7.4.

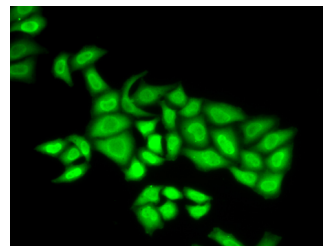
Applications Recommended Dilution

WB 1:500 - 1:2000 IF
1:50 - 1:100

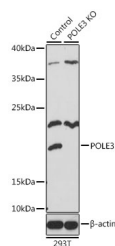
Data



Western blot analysis of extracts of MCF-7 cells with POLE3 Polyclonal Antibody
Observed Mw:17kDa
Calculated Mw:16kDa



Immunofluorescence analysis of U2OS cells with POLE3 Polyclonal Antibody



Western blot analysis of extracts from normal (control) and POLE3 knockout (KO) 293T cells, using POLE3 Polyclonal Antibody at dilution of 1:1000.

Preparation & Storage

Storage Store at -20°C. Avoid freeze / thaw cycles.

For Research Use Only