

PHC3 Polyclonal Antibody

Catalog No. E-AB-62528

Note: Centrifuge before opening to ensure complete recovery of vial contents.

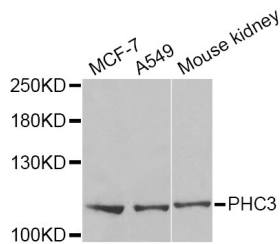
Description

Reactivity	Human, Mouse
Immunogen	Recombinant protein of human PHC3
Host	Rabbit
Isotype	IgG
Purification	Affinity purification
Conjugation	Unconjugated
Buffer	PBS with 0.02% sodium azide and 50% glycerol pH 7.4.

Applications Recommended Dilution

WB 1:500 - 1:2000 IF
1:50 - 1:100

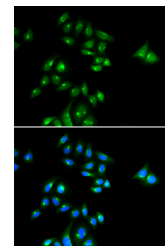
Data



Western blot analysis of extracts of various cell lines with PHC3 Polyclonal Antibody

Observed Mw:106kDa

Calculated Mw:14kDa/16kDa/19kDa/35kDa/104kDa/106kDa/107kDa



Immunofluorescence analysis of U2OS cells with PHC3 Polyclonal Antibody

Preparation & Storage

Storage Store at -20°C. Avoid freeze / thaw cycles.

For Research Use Only