

KIF2B Polyclonal Antibody

Catalog No. E-AB-63189

Note: Centrifuge before opening to ensure complete recovery of vial contents.

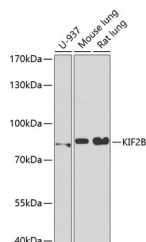
Description

Reactivity	Human, Mouse, Rat
Immunogen	Recombinant fusion protein of human KIF2B (NP_115948.4).
Host	Rabbit
Isotype	IgG
Purification	Affinity purification
Conjugation	Unconjugated
Buffer	PBS with 0.02% sodium azide, 50% glycerol, pH7.3.

Applications Recommended Dilution

WB 1:500-1:2000

Data



Western blot analysis of extracts of various cell lines using KIF2B Polyclonal Antibody at dilution of 1:1000.

Observed Mw:76kDa
Calculated Mw:76kDa

Preparation & Storage

Storage Store at -20°C. Avoid freeze / thaw cycles.

Background

KIF2B (Kinesin Family Member 2B) is a Protein Coding gene. Diseases associated with KIF2B include Charcot-Marie-Tooth Disease, Type 4C and Hereditary Neuropathies. Among its related pathways are Signaling by GPCR and Mitotic Prometaphase. Gene Ontology (GO) annotations related to this gene include ATPase activity and microtubule motor activity. An important paralog of this gene is KIF2A.

For Research Use Only