

CSNK1A1L Polyclonal Antibody

Catalog No. E-AB-61998

Note: Centrifuge before opening to ensure complete recovery of vial contents.

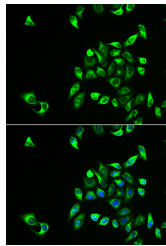
Description

Reactivity	Human
Immunogen	Recombinant fusion protein of human CSNK1A1L (NP_660204.2).
Host	Rabbit
Isotype	IgG
Purification	Affinity purification
Conjugation	Unconjugated
Buffer	PBS with 0.02% sodium azide, 50% glycerol, pH7.3.

Applications Recommended Dilution

IF 1:50-1:100

Data



Immunofluorescence analysis of HeLa cells using CSNK1A1L Polyclonal Antibody

Preparation & Storage

Storage Store at -20°C. Avoid freeze / thaw cycles.

Background

CSNK1A1L (Casein Kinase 1 Alpha 1 Like) is a Protein Coding gene. Diseases associated with CSNK1A1L include Alzheimer Disease. Among its related pathways are Gastric cancer and Wnt signaling pathway. Gene Ontology (GO) annotations related to this gene include transferase activity, transferring phosphorus-containing groups and protein tyrosine kinase activity. An important paralog of this gene is CSNK1A1.

For Research Use Only