

CENPC Polyclonal Antibody

Catalog No. E-AB-61211

Note: Centrifuge before opening to ensure complete recovery of vial contents.

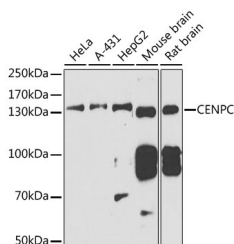
Description

Reactivity	Human,Mouse,Rat
Immunogen	Recombinant fusion protein of human CENPC
Host	Rabbit
Isotype	IgG
Purification	Affinity purification
Conjugation	Unconjugated
Buffer	PBS with 0.02% sodium azide,50% glycerol,pH7.3.

Applications Recommended Dilution

WB 1:500-1:2000

Data



Western blot analysis of extracts of various cell lines using CENPC Polyclonal Antibody at 1:1000 dilution.

Observed Mw:130kDa

Calculated Mw:61kDa/106kDa

Preparation & Storage

Storage Store at -20°C. Avoid freeze / thaw cycles.

Background

Centromere protein C 1 is a centromere autoantigen and a component of the inner kinetochore plate. The protein is required for maintaining proper kinetochore size and a timely transition to anaphase. A putative pseudogene exists on chromosome 12.

For Research Use Only