

(KO Validated) CIRBP Polyclonal Antibody

Catalog No. E-AB-61213

Note: Centrifuge before opening to ensure complete recovery of vial contents.

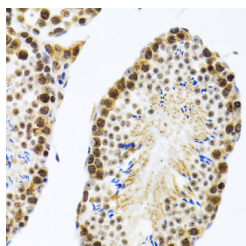
Description

Reactivity	Human,Mouse,Rat
Immunogen	Recombinant fusion protein of human CIRBP (NP_001271.1).
Host	Rabbit
Isotype	IgG
Purification	Affinity purification
Conjugation	Unconjugated
Buffer	PBS with 0.02% sodium azide, 50% glycerol, pH7.3.

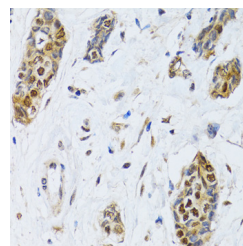
Applications Recommended Dilution

IHC	1:50-1:100
IF	1:10-1:100

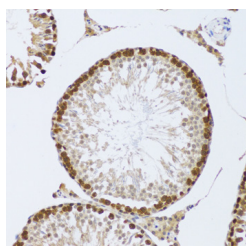
Data



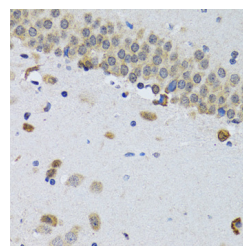
Immunohistochemistry of paraffin-embedded Rat testis using CIRBP Polyclonal Antibody at dilution of 1:100 (40x lens).



Immunohistochemistry of paraffin-embedded Human breast cancer using CIRBP Polyclonal Antibody at dilution of 1:100 (40x lens).

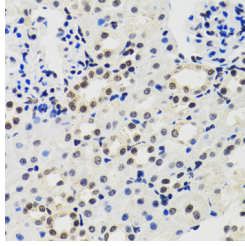


Immunohistochemistry of paraffin-embedded Mouse testis using CIRBP Polyclonal Antibody at dilution of 1:100 (20x lens).

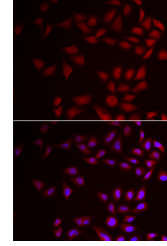


Immunohistochemistry of paraffin-embedded Mouse brain using CIRBP Polyclonal Antibody at dilution of 1:100 (40x lens).

For Research Use Only



Immunohistochemistry of paraffin-embedded Mouse kidney using CIRBP Polyclonal Antibody at dilution of 1:100 (40x lens).



Immunofluorescence analysis of HeLa cells using CIRBP Polyclonal Antibody

Preparation & Storage

Storage Store at -20°C. Avoid freeze / thaw cycles.

Background

CIRBP (Cold Inducible RNA Binding Protein) is a Protein Coding gene. Diseases associated with CIRBP include Cryptorchidism, Unilateral Or Bilateral. Among its related pathways are Neuroscience and Translational Control. Gene Ontology (GO) annotations related to this gene include nucleic acid binding and nucleotide binding. An important paralog of this gene is RBMX.

For Research Use Only