

## Galectin 8 Polyclonal Antibody

Catalog No. E-AB-61270

**Note:** Centrifuge before opening to ensure complete recovery of vial contents.

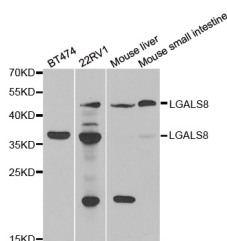
### Description

<b>Reactivity</b>	Human, Mouse
<b>Immunogen</b>	Recombinant protein of human LGALS8
<b>Host</b>	Rabbit
<b>Isotype</b>	IgG
<b>Purification</b>	Affinity purification
<b>Conjugation</b>	Unconjugated
<b>Buffer</b>	PBS with 0.02% sodium azide and 50% glycerol pH 7.4.

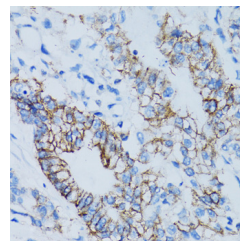
### Applications Recommended Dilution

**WB 1:500 - 1:2000**  
**IHC 1:50 - 1:200 IF**  
**1:10 - 1:100**

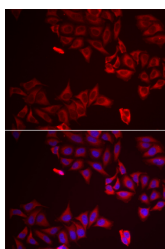
### Data



Western blot analysis of extracts of various cell lines with Galectin 8 Polyclonal Antibody  
**Observed Mw:38kDa, 50kDa**  
**Calculated Mw:35kDa/40kDa**



Immunohistochemistry of paraffin-embedded human colon carcinoma with Galectin 8 Polyclonal Antibody



Immunofluorescence analysis of A549 cells with Galectin 8 Polyclonal Antibody

### Preparation & Storage

**Storage** Store at -20°C. Avoid freeze / thaw cycles.

### For Research Use Only

## Background

This gene encodes a member of the galectin family. Galectins are beta-galactoside-binding animal lectins with conserved carbohydrate recognition domains. The galectins have been implicated in many essential functions including development, differentiation, cell-cell adhesion, cell-matrix interaction, growth regulation, apoptosis, and RNA splicing. This gene is widely expressed in tumoral tissues and seems to be involved in integrin-like cell interactions. Alternatively spliced transcript variants encoding different isoforms have been identified.