

MTA3 Polyclonal Antibody

Catalog Number:E-AB-61279

Note: Centrifuge before opening to ensure complete recovery of vial contents.

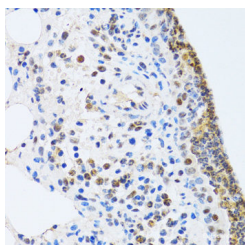
Description

Reactivity	Human,Mouse,Rat
Immunogen	Recombinant fusion protein of human MTA3 (NP_065795.1).
Host	Rabbit
Isotype	IgG
Purification	Affinity purification
Conjugation	Unconjugated
Formulation	PBS with 0.02% sodium azide, 50% glycerol, pH7.3.

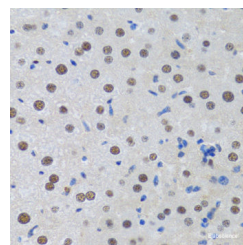
Applications Recommended Dilution

IHC	1:50-1:200
------------	------------

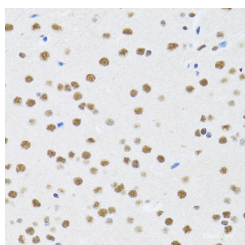
Data



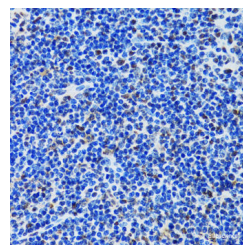
Immunohistochemistry of paraffin-embedded Rat lung using MTA3 Polyclonal Antibody at dilution of 1:100 (40x lens).



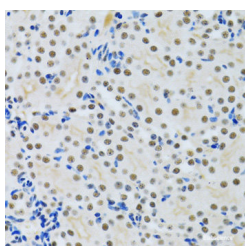
Immunohistochemistry of paraffin-embedded Rat liver using MTA3 Polyclonal Antibody at dilution of 1:100 (40x lens).



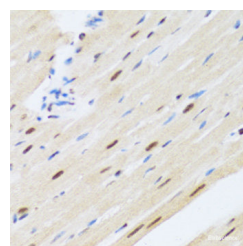
Immunohistochemistry of paraffin-embedded Rat brain using MTA3 Polyclonal Antibody at dilution of 1:100 (40x lens).



Immunohistochemistry of paraffin-embedded Rat spleen using MTA3 Polyclonal Antibody at dilution of 1:100 (40x lens).



Immunohistochemistry of paraffin-embedded Rat kidney using MTA3 Polyclonal Antibody at dilution of 1:100 (40x lens).



Immunohistochemistry of paraffin-embedded Rat heart using MTA3 Polyclonal Antibody at dilution of 1:100 (40x lens).

For Research Use Only

A Reliable Research Partner in Life Science and Medicine

Toll-free: 1-888-852-8623

Web: www.elabscience.com

Tel: 1-832-243-6086

Email: techsupport@elabscience.com

Fax: 1-832-243-6017

MTA3 Polyclonal Antibody

Catalog Number:E-AB-61279



Preparation & Storage

Storage Store at -20°C. Avoid freeze / thaw cycles.

Background

MTA3 (Metastasis Associated 1 Family Member 3) is a Protein Coding gene. Diseases associated with MTA3 include Gastroesophageal Junction Adenocarcinoma and Vertebral, Cardiac, Renal, And Limb Defects Syndrome 1. Among its related pathways are Preimplantation Embryo and Chromatin organization. Gene Ontology (GO) annotations related to this gene include DNA-binding transcription factor activity and chromatin binding. An important paralog of this gene is MTA1.

For Research Use Only

A Reliable Research Partner in Life Science and Medicine

Toll-free: 1-888-852-8623

Web: www.elabscience.com

Tel: 1-832-243-6086

Email: techsupport@elabscience.com

Fax: 1-832-243-6017