

PPP1R8 Polyclonal Antibody

Catalog No. E-AB-61309

Note: Centrifuge before opening to ensure complete recovery of vial contents.

Description

Reactivity	Human, Mouse, Rat
Immunogen	Recombinant fusion protein of human PPP1R8 (NP_612568.1).
Host	Rabbit
Isotype	IgG
Purification	Affinity purification
Conjugation	Unconjugated
Buffer	PBS with 0.02% sodium azide, 50% glycerol, pH7.3.

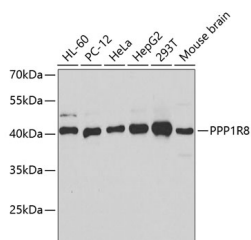
Applications Recommended Dilution

WB 1:500-1:2000 IHC

1:50-1:200 IF

1:50-1:100

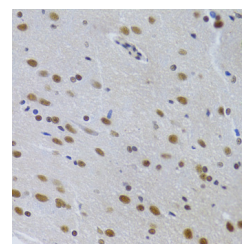
Data



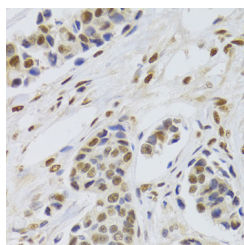
Western blot analysis of extracts of various cell lines using PPP1R8 Polyclonal Antibody at dilution of 1:1000.

Observed Mw:40kDa

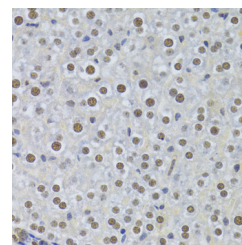
Calculated Mw:13kDa/22kDa/38kDa



Immunohistochemistry of paraffin-embedded Rat brain using PPP1R8 Polyclonal Antibody at dilution of 1:100 (40x lens).

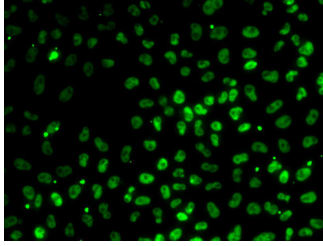


Immunohistochemistry of paraffin-embedded Human breast cancer using PPP1R8 Polyclonal Antibody at dilution of 1:100 (40x lens).



Immunohistochemistry of paraffin-embedded Mouse liver using PPP1R8 Polyclonal Antibody at dilution of 1:100 (40x lens).

For Research Use Only



Immunofluorescence analysis of MCF7 cells using
PPP1R8 Polyclonal Antibody

Preparation & Storage

Storage Store at -20°C. Avoid freeze / thaw cycles.

Background

This gene, through alternative splicing, encodes three different isoforms. Two of the protein isoforms encoded by this gene are specific inhibitors of type 1 serine/threonine protein phosphatases and can bind but not cleave RNA. The third protein isoform lacks the phosphatase inhibitory function but is a single-strand endoribonuclease comparable to RNase E of *E. coli*. This isoform requires magnesium for its function and cleaves specific sites in A+U-rich regions of RNA.