

RALB Polyclonal Antibody

Catalog No. E-AB-61319

Note: Centrifuge before opening to ensure complete recovery of vial contents.

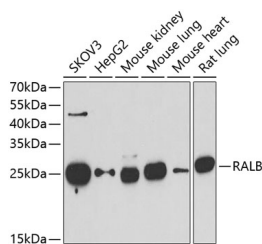
Description

Reactivity	Human, Mouse, Rat
Immunogen	Recombinant fusion protein of human RALB (NP_002872.1).
Host	Rabbit
Isotype	IgG
Purification	Affinity purification
Conjugation	Unconjugated
Buffer	PBS with 0.02% sodium azide, 50% glycerol, pH7.3.

Applications Recommended Dilution

WB 1:500-1:2000

Data



Western blot analysis of extracts of various cell lines using RALB Polyclonal Antibody at dilution of 1:1000.

Observed Mw:23kDa
Calculated Mw:23kDa/25kDa

Preparation & Storage

Storage Store at -20°C. Avoid freeze / thaw cycles.

Background

This gene encodes a GTP-binding protein that belongs to the small GTPase superfamily and Ras family of proteins. GTP-binding proteins mediate the transmembrane signaling initiated by the occupancy of certain cell surface receptors.

For Research Use Only