

RPH3A Polyclonal Antibody

Catalog No. E-AB-61322

Note: Centrifuge before opening to ensure complete recovery of vial contents.

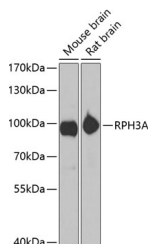
Description

Reactivity	Mouse,Rat
Immunogen	Recombinant fusion protein of human RPH3A (NP_055769.2).
Host	Rabbit
Isotype	IgG
Purification	Affinity purification
Conjugation	Unconjugated
Buffer	PBS with 0.02% sodium azide, 50% glycerol, pH7.3.

Applications Recommended Dilution

WB 1:500-1:2000

Data



Western blot analysis of extracts of various cell lines using RPH3A Polyclonal Antibody at dilution of 1:1000.

Observed Mw:95kDa
Calculated Mw:76kDa

Preparation & Storage

Storage Store at -20°C. Avoid freeze / thaw cycles.

Background

The protein encoded by this gene is thought to be an effector for RAB3A, which is a small G protein that acts in the late stages of neurotransmitter exocytosis. The encoded protein may be involved in neurotransmitter release and synaptic vesicle traffic.

For Research Use Only