

SNAP91 Polyclonal Antibody

Catalog Number:E-AB-61338



Note: Centrifuge before opening to ensure complete recovery of vial contents.

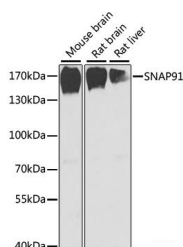
Description

Reactivity	Mouse,Rat
Immunogen	Recombinant fusion protein of human SNAP91 (NP_001229723.1).
Host	Rabbit
Isotype	IgG
Purification	Affinity purification
Conjugation	Unconjugated
Formulation	PBS with 0.02% sodium azide, 50% glycerol, pH7.3.

Applications Recommended Dilution

WB	1:500-1:2000
-----------	--------------

Data



Western blot analysis of extracts of various cell lines using SNAP91 Polyclonal Antibody at dilution of 1:1000.

Observed Mw:180kDa

Calculated Mw:6kDa/63kDa/89kDa/92kDa

Preparation & Storage

Storage Store at -20°C. Avoid freeze / thaw cycles.

Background

SNAP91 (Synaptosome Associated Protein 91) is a Protein Coding gene. Diseases associated with SNAP91 include Cataract 8, Multiple Types and Myopathy, Centronuclear, 2. Among its related pathways are Clathrin-mediated endocytosis and Vesicle-mediated transport. Gene Ontology (GO) annotations related to this gene include protein kinase binding and clathrin binding. An important paralog of this gene is PICALM.

For Research Use Only

A Reliable Research Partner in Life Science and Medicine

Toll-free: 1-888-852-8623

Web: www.elabscience.com

Tel: 1-832-243-6086

Email: techsupport@elabscience.com

Fax: 1-832-243-6017