

SPINT2 Polyclonal Antibody

Catalog No. E-AB-63044

Note: Centrifuge before opening to ensure complete recovery of vial contents.

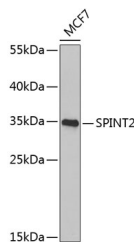
Description

Reactivity	Human
Immunogen	Recombinant fusion protein of human SPINT2
Host	Rabbit
Isotype	IgG
Purification	Affinity purification
Conjugation	Unconjugated
Buffer	PBS with 0.02% sodium azide, 50% glycerol, pH7.3.

Applications Recommended Dilution

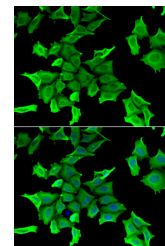
WB	1:500-1:2000
IF	1:50-1:100

Data



Western blot analysis of extracts of MCF-7 cells using SPINT2 Polyclonal Antibody at 1:1000 dilution.

Observed Mw:34kDa
Calculated Mw:21kDa/28kDa



Immunofluorescence analysis of HeLa cells using SPINT2 Polyclonal Antibody Blue: DAPI for nuclear staining.

Preparation & Storage

Storage Store at -20°C. Avoid freeze / thaw cycles.

Background

This gene encodes a transmembrane protein with two extracellular Kunitz domains that inhibits a variety of serine proteases. The protein inhibits HGF activator which prevents the formation of active hepatocyte growth factor. This gene is a putative tumor suppressor, and mutations in this gene result in congenital sodium diarrhea. Multiple transcript variants encoding different isoforms have been found for this gene.

For Research Use Only