

GTF2H1 Polyclonal Antibody

Catalog No. E-AB-63854

Note: Centrifuge before opening to ensure complete recovery of vial contents.

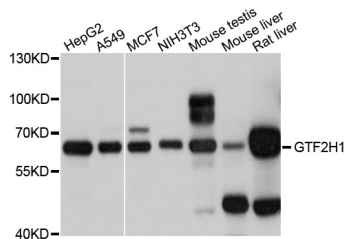
Description

Reactivity	Human, Mouse, Rat
Immunogen	Recombinant protein of human GTF2H1
Host	Rabbit
Isotype	IgG
Purification	Affinity purification
Conjugation	Unconjugated
Buffer	PBS with 0.02% sodium azide and 50% glycerol pH 7.4.

Applications Recommended Dilution

WB 1:500-1:1000

Data



Western blot analysis of extracts of various cell lines with GTF2H1 Polyclonal Antibody

Observed Mw:65kDa

Calculated Mw:48kDa/62kDa

Preparation & Storage

Storage Store at -20°C. Avoid freeze / thaw cycles.

For Research Use Only