

RBBP7 Polyclonal Antibody

Catalog No. E-AB-61438

Note: Centrifuge before opening to ensure complete recovery of vial contents.

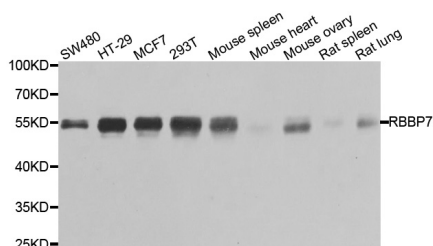
Description

Reactivity	Human,Mouse,Rat
Immunogen	Recombinant protein of human RBBP7
Host	Rabbit
Isotype	IgG
Purification	Affinity purification
Conjugation	Unconjugated
Buffer	PBS with 0.02% sodium azide and 50% glycerol pH 7.4.

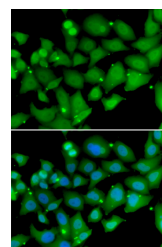
Applications Recommended Dilution

WB 1:500 - 1:2000 IF
1:50 - 1:100 IP 1:50 -
1:200

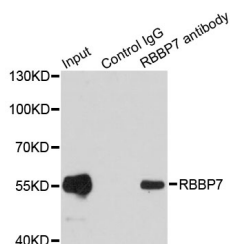
Data



Western blot analysis of extracts of various cell lines with RBBP7 Polyclonal Antibody
Observed Mw:48kDa
Calculated Mw:47kDa/52kDa



Immunofluorescence analysis of MCF-7 cells with RBBP7 Polyclonal Antibody



Immunoprecipitation analysis of 200ug extracts of MCF7 cells with RBBP7 Polyclonal Antibody

Preparation & Storage

Storage Store at -20°C. Avoid freeze / thaw cycles.

For Research Use Only

Background

This protein is a ubiquitously expressed nuclear protein and belongs to a highly conserved subfamily of WD-repeat proteins. It is found among several proteins that binds directly to retinoblastoma protein, which regulates cell proliferation. The encoded protein is found in many histone deacetylase complexes, including mSin3 co-repressor complex. It is also present in protein complexes involved in chromatin assembly. This protein can interact with BRCA1 tumor-suppressor gene and may have a role in the regulation of cell proliferation and differentiation. Two transcript variants encoding different isoforms have been found for this gene.