

ZNF148 Polyclonal Antibody

Catalog Number: E-AB-61458



Note: Centrifuge before opening to ensure complete recovery of vial contents.

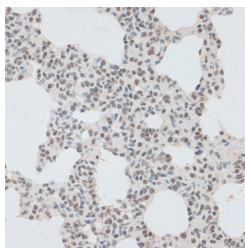
Description

Reactivity	Human, Mouse, Rat
Immunogen	Recombinant fusion protein of human ZNF148 (NP_068799.2).
Host	Rabbit
Isotype	IgG
Purification	Affinity purification
Conjugation	Unconjugated
Formulation	PBS with 0.02% sodium azide, 50% glycerol, pH7.3.

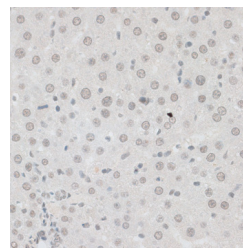
Applications Recommended Dilution

IHC	1:50-1:100
IF	1:20-1:100

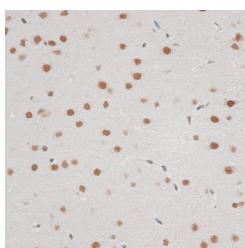
Data



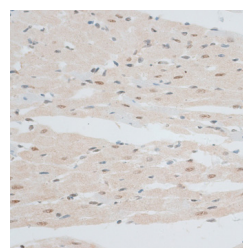
Immunohistochemistry of paraffin-embedded Rat lung using ZNF148 Polyclonal Antibody at dilution of 1:100 (40x lens).



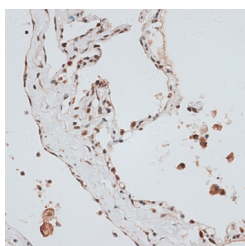
Immunohistochemistry of paraffin-embedded Rat liver using ZNF148 Polyclonal Antibody at dilution of 1:100 (40x lens).



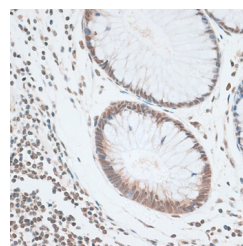
Immunohistochemistry of paraffin-embedded Rat brain using ZNF148 Polyclonal Antibody at dilution of 1:100 (40x lens).



Immunohistochemistry of paraffin-embedded Rat heart using ZNF148 Polyclonal Antibody at dilution of 1:100 (40x lens).



Immunohistochemistry of paraffin-embedded Human lung using ZNF148 Polyclonal Antibody at



Immunohistochemistry of paraffin-embedded Human colon using ZNF148 Polyclonal Antibody at

For Research Use Only

A Reliable Research Partner in Life Science and Medicine

Toll-free: 1-888-852-8623

Web: www.elabscience.com

Tel: 1-832-243-6086

Email: techsupport@elabscience.com

Fax: 1-832-243-6017

ZNF148 Polyclonal Antibody

Catalog Number: E-AB-61458



dilution of 1:100 (40x lens).

dilution of 1:100 (40x lens).

Preparation & Storage

Storage Store at -20°C. Avoid freeze / thaw cycles.

Background

The protein encoded by this gene is a member of the Kruppel family of zinc finger DNA binding proteins. The encoded protein activates transcription of the T-cell receptor and intestinal alkaline phosphatase genes but represses transcription of the ornithine decarboxylase, vimentin, gastrin, stomelysin, and enolase genes. Increased expression of this gene results in decreased patient survival rates from colorectal cancer, while mutations in this gene have been associated with global developmental delay, hypoplastic corpus callosum, and dysmorphic facies.

For Research Use Only

A Reliable Research Partner in Life Science and Medicine

Toll-free: 1-888-852-8623

Tel: 1-832-243-6086

Fax: 1-832-243-6017

Web: www.elabscience.com

Email: techsupport@elabscience.com