

QKI Polyclonal Antibody

Catalog No. E-AB-61487

Note: Centrifuge before opening to ensure complete recovery of vial contents.

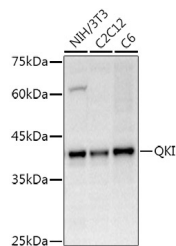
Description

Reactivity	Human,Mouse,Rat
Immunogen	Recombinant fusion protein of human QKI
Host	Rabbit
Isotype	IgG
Purification	Affinity purification
Conjugation	Unconjugated
Buffer	PBS with 0.05% proclin300,50% glycerol,pH7.3.

Applications Recommended Dilution

WB	1:500-1:2000
IF	1:50-1:200

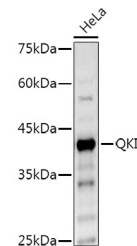
Data



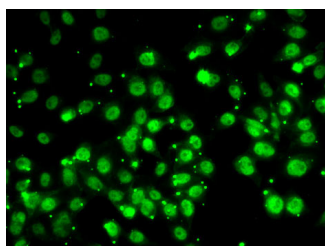
Western blot analysis of extracts of various cell lines using QKI Polyclonal Antibody at 1:500 dilution.

Observed Mw:38KDa

Calculated Mw:35kDa/36kDa/37kDa



Western blot analysis of extracts of HeLa cells using QKI Polyclonal Antibody at 1:500 dilution.



Immunofluorescence analysis of MCF7 cells using QKI Polyclonal antibody.

Preparation & Storage

Storage Store at -20°C. Avoid freeze / thaw cycles.

Background

For Research Use Only

The protein encoded by this gene is an RNA-binding protein that regulates pre-mRNA splicing, export of mRNAs from the nucleus, protein translation, and mRNA stability. The encoded protein is involved in myelination and oligodendrocyte differentiation and may play a role in schizophrenia. Multiple transcript variants encoding different isoforms have been found for this gene.