

STAM2 Polyclonal Antibody

Catalog No. E-AB-61497

Note: Centrifuge before opening to ensure complete recovery of vial contents.

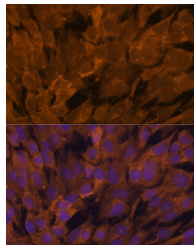
Description

Reactivity	Human,Mouse,Rat
Immunogen	Recombinant fusion protein of human STAM2 (NP_005834.4).
Host	Rabbit
Isotype	IgG
Purification	Affinity purification
Conjugation	Unconjugated
Buffer	PBS with 0.02% sodium azide, 50% glycerol, pH7.3.

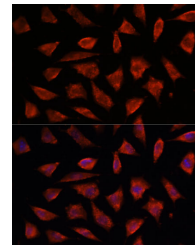
Applications Recommended Dilution

IF 1:50-1:100

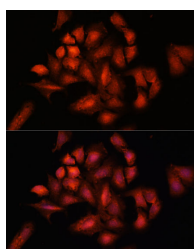
Data



Immunofluorescence analysis of C6 cells using STAM2 Polyclonal Antibody at dilution of 1:100.
Blue: DAPI for nuclear staining.



Immunofluorescence analysis of L929 cells using STAM2 Polyclonal Antibody at dilution of 1:100.
Blue: DAPI for nuclear staining.



Immunofluorescence analysis of U-2 OS cells using STAM2 Polyclonal Antibody at dilution of 1:100.
Blue: DAPI for nuclear staining.

Preparation & Storage

Storage Store at -20°C. Avoid freeze / thaw cycles.

Background

The protein encoded by this gene is closely related to STAM, an adaptor protein involved in the downstream signaling of

For Research Use Only

cytokine receptors, both of which contain a SH3 domain and the immunoreceptor tyrosine-based activation motif (ITAM). Similar to STAM, this protein acts downstream of JAK kinases, and is phosphorylated in response to cytokine stimulation. This protein and STAM thus are thought to exhibit compensatory effects on the signaling pathway downstream of JAK kinases upon cytokine stimulation.