

TUSC2 Polyclonal Antibody

Catalog No. E-AB-61509

Note: Centrifuge before opening to ensure complete recovery of vial contents.

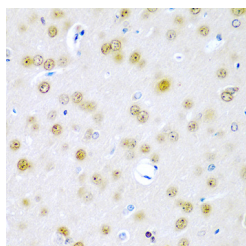
Description

Reactivity	Human,Mouse,Rat
Immunogen	Recombinant fusion protein of human TUSC2 (NP_009206.1).
Host	Rabbit
Isotype	IgG
Purification	Affinity purification
Conjugation	Unconjugated
Buffer	PBS with 0.02% sodium azide, 50% glycerol, pH7.3.

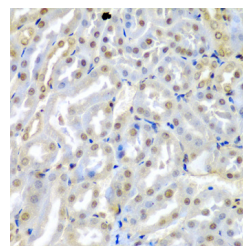
Applications Recommended Dilution

IHC 1:50-1:200 IF
1:50-1:100

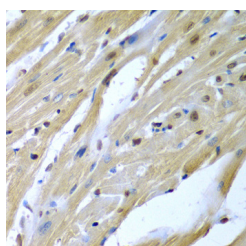
Data



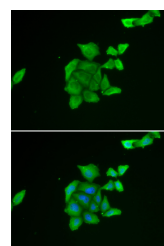
Immunohistochemistry of paraffin-embedded Rat brain using TUSC2 Polyclonal Antibody at dilution of 1:200 (40x lens).



Immunohistochemistry of paraffin-embedded Mouse kidney using TUSC2 Polyclonal Antibody at dilution of 1:200 (40x lens).



Immunohistochemistry of paraffin-embedded Mouse heart using TUSC2 Polyclonal Antibody at dilution of 1:200 (40x lens).



Immunofluorescence analysis of U2OS cells using TUSC2 Polyclonal Antibody

Preparation & Storage

Storage Store at -20°C. Avoid freeze / thaw cycles.

Background

For Research Use Only

This gene is a highly conserved lung cancer candidate gene. No other information about this gene is currently available.