

## METTL13 Polyclonal Antibody

**Catalog No.** E-AB-61532

**Note:** Centrifuge before opening to ensure complete recovery of vial contents.

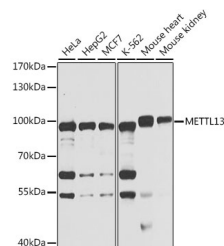
### Description

<b>Reactivity</b>	Human,Mouse,Rat
<b>Immunogen</b>	Recombinant fusion protein of human METTL13
<b>Host</b>	Rabbit
<b>Isotype</b>	IgG
<b>Purification</b>	Affinity purification
<b>Conjugation</b>	Unconjugated
<b>Buffer</b>	PBS with 0.02% sodium azide,50% glycerol,pH7.3.

### Applications Recommended Dilution

**WB** 1:500-1:2000

### Data



Western blot analysis of extracts of various cell lines using METTL13 Polyclonal Antibody at 1:1000 dilution.

**Observed Mw:90kDa**

**Calculated Mw:44kDa/61kDa/68kDa/72kDa/78kDa**

### Preparation & Storage

**Storage** Store at -20°C. Avoid freeze / thaw cycles.

### Background

Dual methyltransferase that catalyzes methylation of elongation factor 1-alpha (EEF1A1 and EEF1A2 at two different positions, and is therefore involved in the regulation of mRNA translation. Via its C-terminus, methylates EEF1A1 and EEF1A2 at the N-terminal residue 'Gly-2'. Via its N-terminus dimethylates EEF1A1 and EEF1A2 at residue 'Lys-55'. Has no activity towards core histones H2A, H2B, H3 and H4. Negatively regulates cell proliferation at G1/S transition via transcriptional suppression of cell cycle regulatory genes such as CDK4 and CDK6.

### For Research Use Only