

## COMMD1 Polyclonal Antibody

**Catalog No.** E-AB-61556

**Note:** Centrifuge before opening to ensure complete recovery of vial contents.

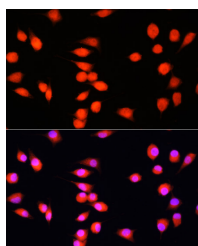
### Description

<b>Reactivity</b>	Human,Mouse,Rat
<b>Immunogen</b>	Recombinant fusion protein of human COMMD1 (NP_689729.1).
<b>Host</b>	Rabbit
<b>Isotype</b>	IgG
<b>Purification</b>	Affinity purification
<b>Conjugation</b>	Unconjugated
<b>Buffer</b>	PBS with 0.02% sodium azide, 50% glycerol, pH7.3.

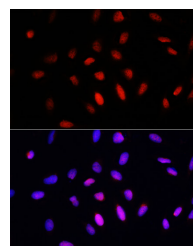
### Applications Recommended Dilution

**IF** 1:50-1:100

### Data



Immunofluorescence analysis of L929 cells using COMMD1 Polyclonal Antibody at dilution of 1:100. Blue: DAPI for nuclear staining.



Immunofluorescence analysis of U2OS cells using COMMD1 Polyclonal Antibody at dilution of 1:100. Blue: DAPI for nuclear staining.

### Preparation & Storage

**Storage** Store at -20°C. Avoid freeze / thaw cycles.

### Background

COMMD1 (Copper Metabolism Domain Containing 1) is a Protein Coding gene. Diseases associated with COMMD1 include Wilson Disease and Menkes Disease. Among its related pathways are HIF Repressors and Copper homeostasis. Gene Ontology (GO) annotations related to this gene include protein homodimerization activity and copper ion binding.

### For Research Use Only