

COMMD1 Polyclonal Antibody

Catalog Number:E-AB-61556



Note: Centrifuge before opening to ensure complete recovery of vial contents.

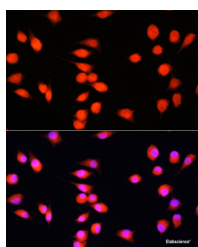
Description

Reactivity	Human,Mouse,Rat
Immunogen	Recombinant fusion protein of human COMMD1 (NP_689729.1).
Host	Rabbit
Isotype	IgG
Purification	Affinity purification
Conjugation	Unconjugated
Formulation	PBS with 0.02% sodium azide, 50% glycerol, pH7.3.

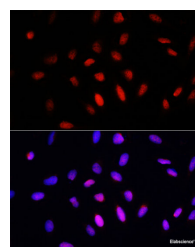
Applications Recommended Dilution

IF	1:50-1:100
-----------	------------

Data



Immunofluorescence analysis of L929 cells using COMMD1 Polyclonal Antibody at dilution of 1:100.
Blue: DAPI for nuclear staining.



Immunofluorescence analysis of U2OS cells using COMMD1 Polyclonal Antibody at dilution of 1:100.
Blue: DAPI for nuclear staining.

Preparation & Storage

Storage	Store at -20°C. Avoid freeze / thaw cycles.
----------------	---

Background

COMMD1 (Copper Metabolism Domain Containing 1) is a Protein Coding gene. Diseases associated with COMMD1 include Wilson Disease and Menkes Disease. Among its related pathways are HIF Repressors and Copper homeostasis. Gene Ontology (GO) annotations related to this gene include protein homodimerization activity and copper ion binding.

For Research Use Only

A Reliable Research Partner in Life Science and Medicine

Toll-free: 1-888-852-8623

Web: www.elabscience.com

Tel: 1-832-243-6086

Email: techsupport@elabscience.com

Fax: 1-832-243-6017