

CRISP2 Polyclonal Antibody

Catalog No. E-AB-61566

Note: Centrifuge before opening to ensure complete recovery of vial contents.

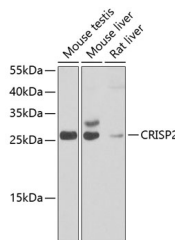
Description

Reactivity	Mouse,Rat
Immunogen	Recombinant fusion protein of human CRISP2 (NP_003287.1).
Host	Rabbit
Isotype	IgG
Purification	Affinity purification
Conjugation	Unconjugated
Buffer	PBS with 0.02% sodium azide, 50% glycerol, pH7.3.

Applications Recommended Dilution

WB 1:500-1:2000

Data



Western blot analysis of extracts of various cell lines using CRISP2 Polyclonal Antibody at dilution of 1:1000.

Observed Mw:27kDa
Calculated Mw:27kDa/31kDa

Preparation & Storage

Storage Store at -20°C. Avoid freeze / thaw cycles.

Background

CRISP2 (Cysteine Rich Secretory Protein 2) is a Protein Coding gene. Diseases associated with CRISP2 include Pelvic Varices. An important paralog of this gene is CRISP3.

For Research Use Only